

COPYRIGHT © ESB ENGINEERING & FACILITY MANAGEMENT LIMITED.
 All rights reserved. No part of this work may be modified or reproduced or copied in any form or by any means - graphics, electronic or mechanical, including photocopying, recording, taping or information-and-retrieval system, or used for any purpose than its designated purpose, without the written permission of ESB Engineering & Facility Management Ltd.

This Project is being proposed by EirGrid plc, the Transmission System Operator and will be owned by ESB the Transmission Asset Owner.

Legend

- Proposed upgrade to the existing Ballyragget - Kilkenny 110 kV line
- 110 kV Angle Mast (symbol not to scale)
- 110 kV Poleset (symbol not to scale)
- Permitted Planning Site Boundary (600m corridor) Nov-12
- Existing 38 kV line
- Protected Structure
- National Monument
- Sites and Monuments Records
- An Post Geodirectory
- Special Area of Conservation
- Proposed National Heritage Area
- Special Protection Area

Key Map

Client

1	Nov -12	Changes to Legend	E	E	S
			McM	McM	McL
					BD
Rev.	Date	Revision Description	Drn	Pro	Ver
					App

Drawing Title

Aerial Photography

Project

Laois - Kilkenny Reinforcement Project

Production Unit

OHL High Voltage

ESB International
 ESB Energy Innovation

ESB Engineering Solutions, Stephen Court, 18-21 St. Stephen's Green, Dublin 2, Ireland. Tel: +353 (0)1 703 8000 Fax: +353 (0)1 703 7186 Email: marketing@esbie.ie Web: www.esbie.ie

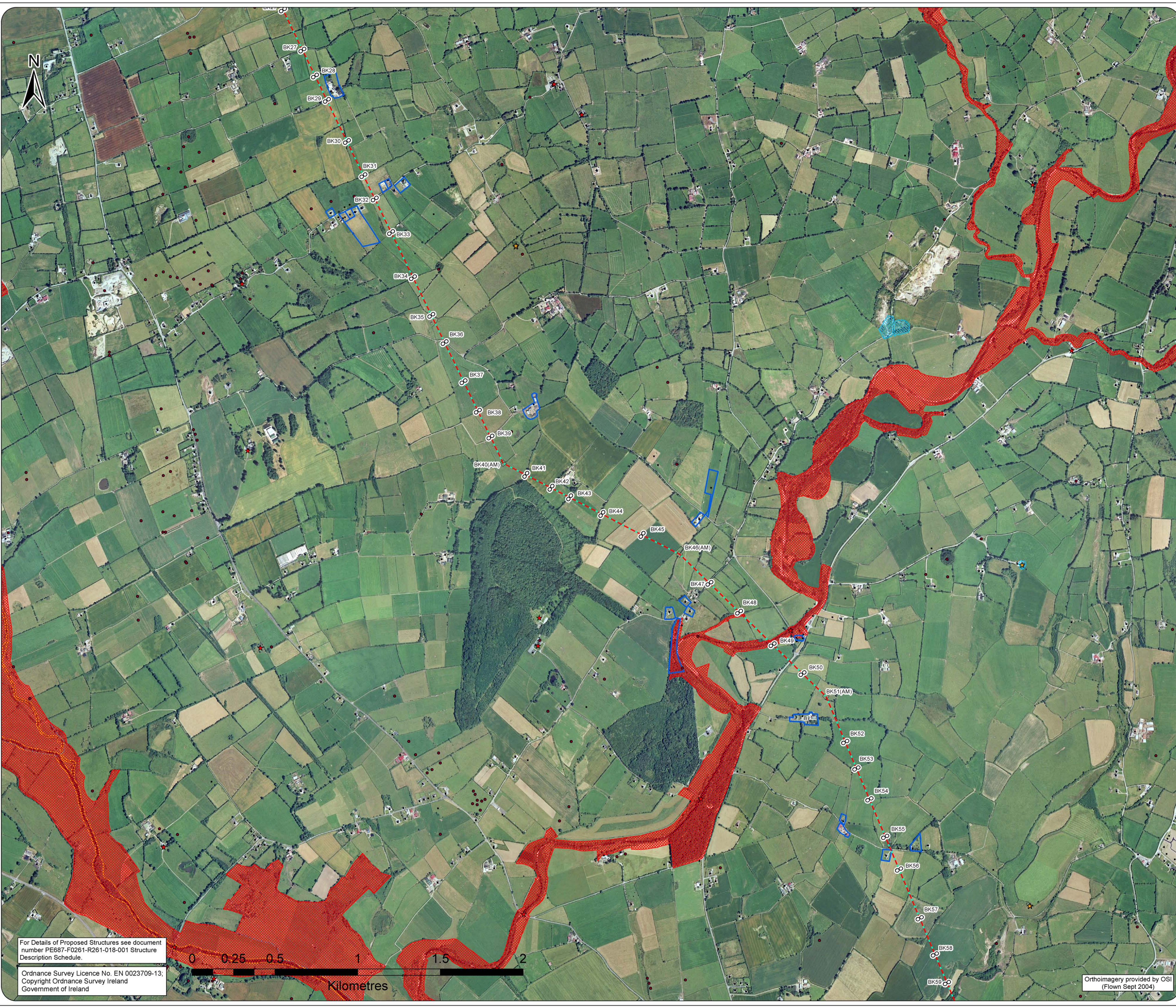
ESB Engineering Solutions is a trading name of ESB Engineering & Facility Management Limited. Registered Office: as above Registered in Ireland No. 155249

Drawn	Produced	Verified	Approved	Approved date
EMcM	EMcM	SMcL	BD	Dec-2012

Client ref.	No. of sheets	Size	Scale
	06 of 08	A1	1 : 10,560

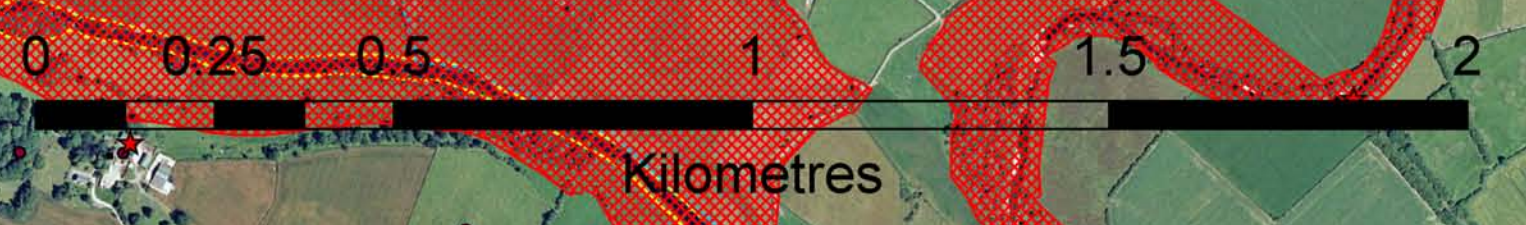
Drawing number

PE687-D261-026-006-001



For Details of Proposed Structures see document number PE687-F0261-R261-018-001 Structure Description Schedule.

Ordnance Survey Licence No. EN 0023709-13; Copyright Ordnance Survey Ireland Government of Ireland



Orthoimagery provided by OSI (Flown Sept 2004)